

# Oldcastle Lawn & Garden Safety Lessons Learned



Recordable Injury 9-xx-16



# Recordable Injury

- Time with company: 2 months.
- Conditions: normal, dry, inside shop.
- Employee was kneeling on the floor cutting the tread off a conveyor belt with a utility knife.
- As he cut through the belt, he continued the motion with the knife and cut his left palm.
- A Risk Assessment was not completed before the task.
- Employee received 4 stitches and was put on antibiotics.

# Lessons Learned



Employee was cutting towards himself when the knife slipped off the belt and into his left hand.



# Lessons Learned

**Knife used during injury**

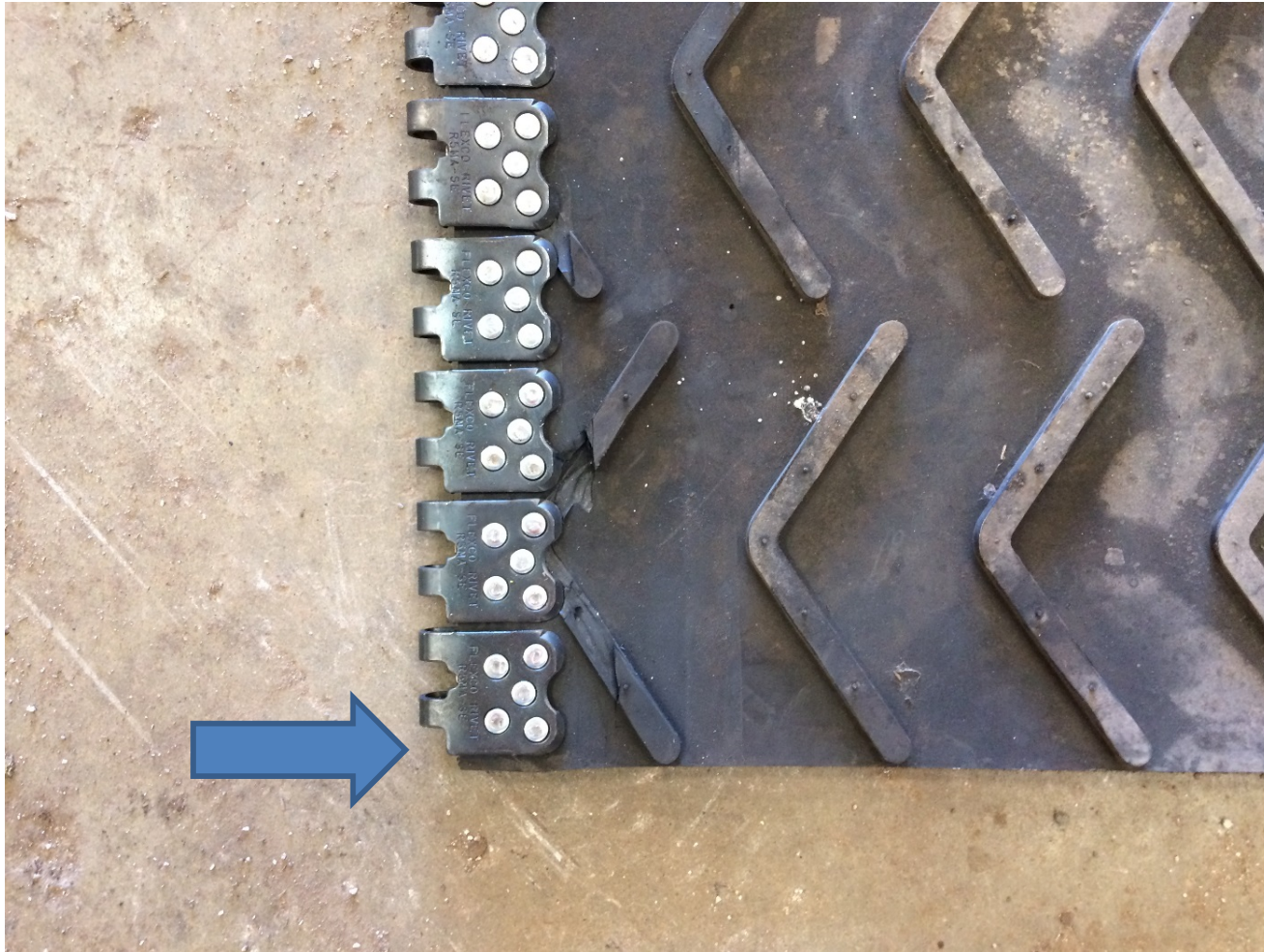


**Safety knife with self retracting blade. (Grainger #16W202, \$7.67)**



The knife used during the injury had no safety features and exposed most of the razor blade. Other knives have safety features that retract the blade after it leaves the material being cut, even if the blade switch is held in the open position.

# Lessons Learned



The tread on the belt must be removed to attach belt lacing.



# Lessons Learned



This task is typically done by grinding the tread off with a grinder or carbide hole bit. This method was not shared with the new hire.

# Lessons Learned

## Gloves used during injury



Cut resistant gloves. ANSI/ISEA cut level 5, Kevlar (Grainger #11V562, \$12.12)



Employee was wearing leather gloves at the time of injury. Cut resistant gloves would be better for this task.

# Actions To Prevent Reoccurrence

- Always cut away from body when using knife.
- Employees are not allowed to use knives brought from home. Only knives provided by Oldcastle may be used.
- Provide safety knives to employees.
- Ensure employees are abiding by new glove policy.
- Make sure TRACK forms are completed before new tasks and new hires are receiving proper training.